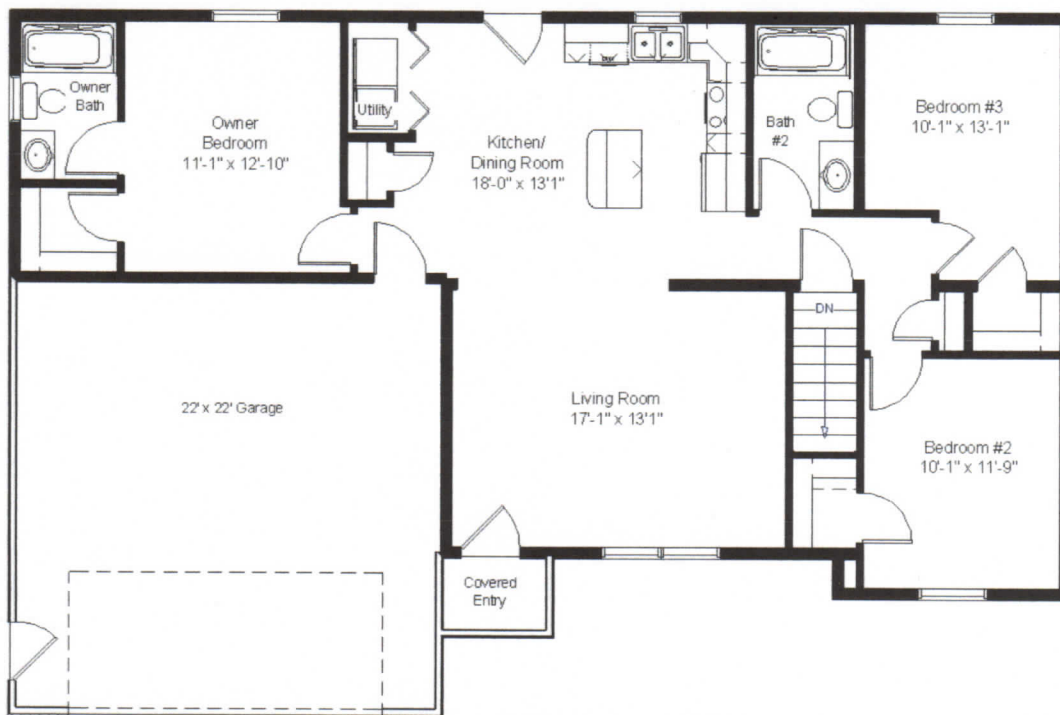




1260 Sq Ft

3 Bedroom

2 Bath



House Includes:

- Qualifies for Utility Provider's Energy Programs
- 94% Efficient Furnace – 14 SEER Air Conditioner
- R-21 Wall Insulation and R-50 Ceiling Insulation
- Sliverline Low E Windows and Sliding Patio Door
- Merillat Oak Face Framed Cabinets
- 6/12 Roof Pitch
- 2 x 6 Exterior Walls
- 30 Year Architectural Shingles
- Main Floor Laundry
- Covered Front Entrance
- 22 by 22 Garage
- 8 Foot Tall 8 Inch Thick Basement Wall

Building Footprint:

56' Wide by 36' Deep

Home Built By:

