

Harwick II



1100 Sq Ft

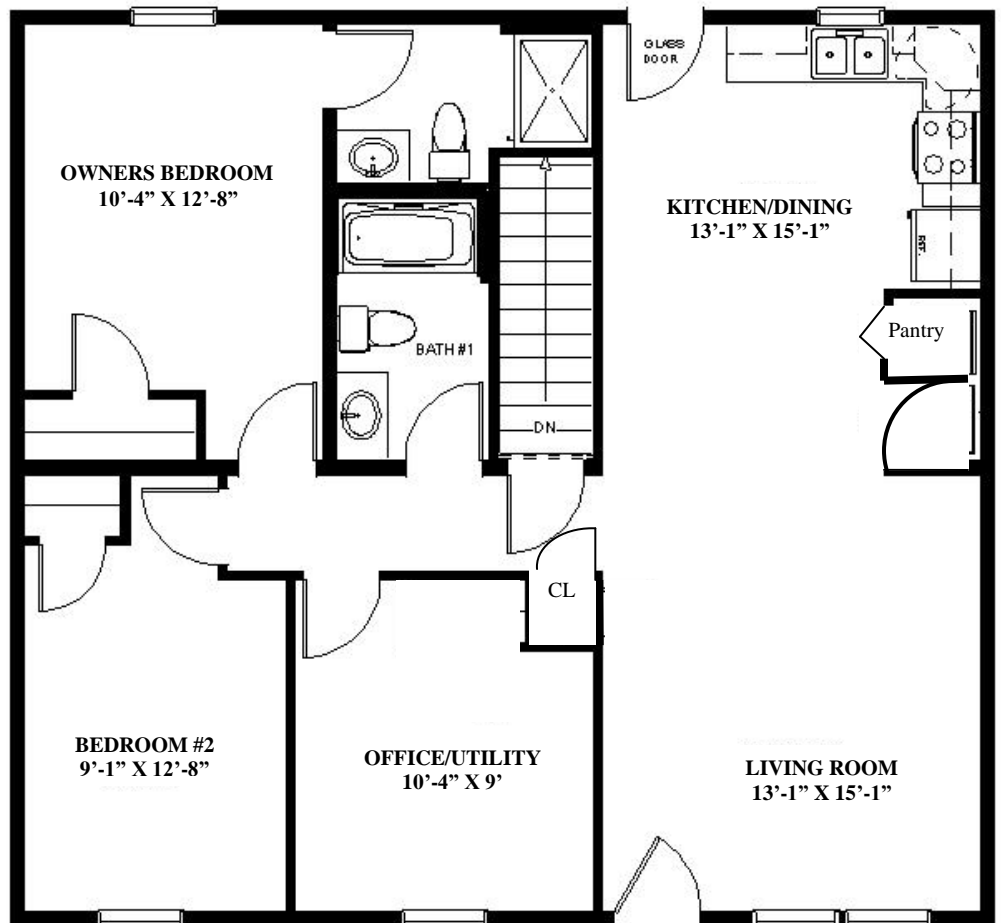
2 Bedroom

2 Bath

Den/Office/Utility

Plan Includes:

- Qualifies for Utility Provider's Energy Programs
- 96% Efficient Furnace – 14 SEER
- Air Conditioner
- R-21 Wall & R-49 Ceiling Insulation
- Sliverline by Andersen LowE Windows
- Solid Oak Face Frame Cabinets
- 6/12 Roof Pitch
- 2 x 6 Exterior Walls
- 30 Year Architectural Shingles
- Main Floor Laundry



Home Built By:

